

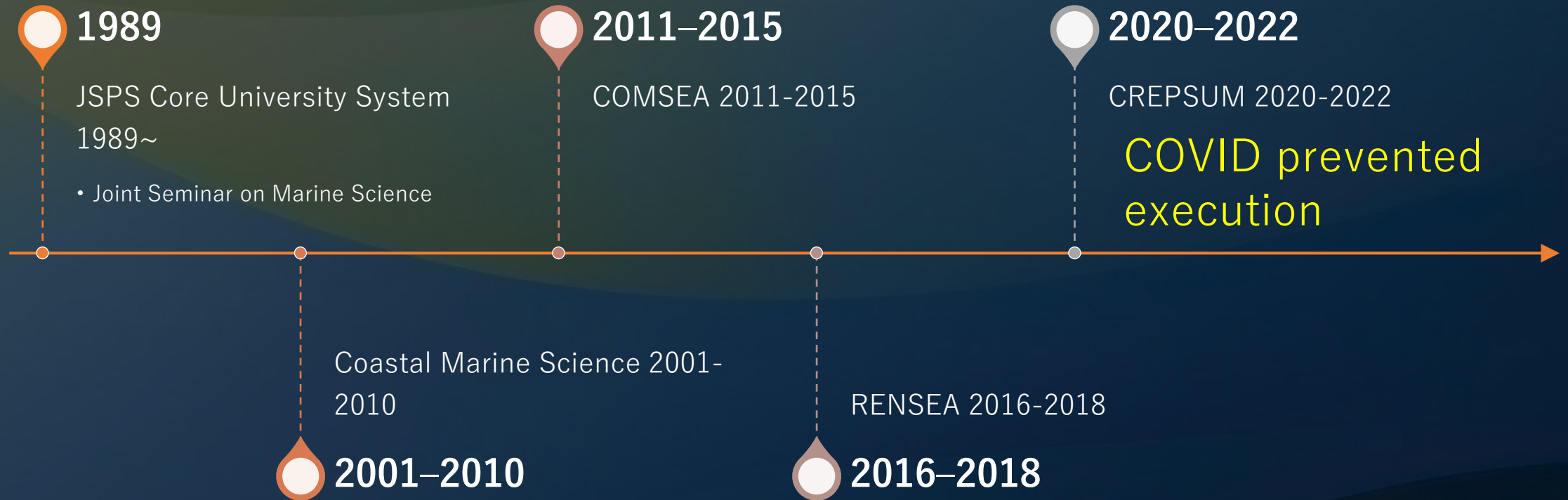


# STRATEGIC PLANNING FOR FUTURE COLLABORATION

JSPS Core-to-core CREPSUM Joint Meeting

March 8-9, 2023

# History of SEA-JAPAN collaboration under JSPS





# CREPSUM funding carry over to FY2023

Original term : FY2020-2022

Considering the influence of COVID-19 pandemic

Budgetary support from AORI's UNDOS project for Joint Seminar

CREPSUM continue to FY2023 with limited amount of funding  
(~2M JPY)

Publication

Invitation/dispatch (young) scientists

Limited support for field study

Supporting capacity building activity

Planning meeting ?

etc.





# JSPS

## JSPS funding scheme

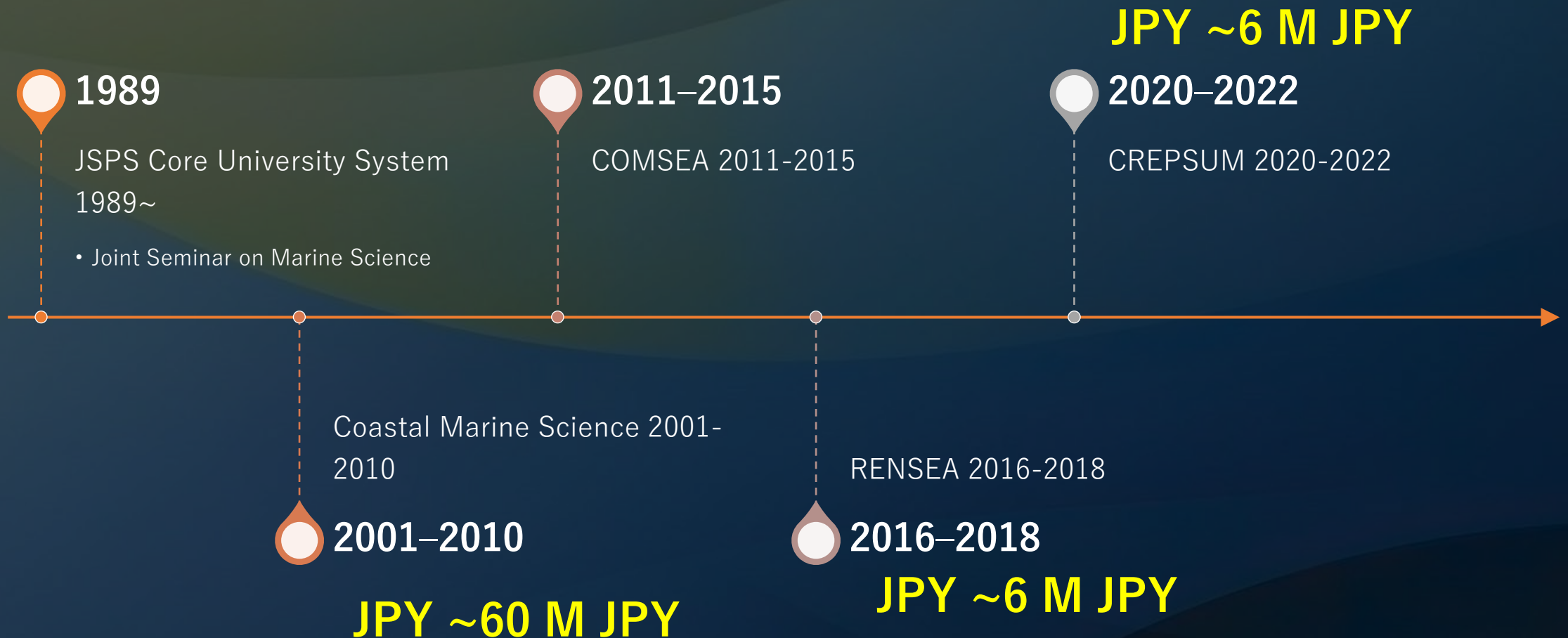
---

- Changing strategy of JSPS for international cooperation (decreasing the size of funding)
- 2012: new scheme of Core-to-core  
(1) Advanced Research Networks (need matching fund), and (2) Asia-Africa Science Platforms

*...designed to create top world-class research centers that partner over the long term with other core research institutions around the world in advancing research in leading-edge fields, on issues of high international priority...*



# History of SEA-JAPAN collaboration under JSPS



# CoastalMarineScience/A-CORE (~2015) vs RENSEA/CREPSUM (after 2016)

- CMS/A-core: Research and networking funding
- JSPS Core-to-core:

Potentially Res.&Networking if the number of members are limited


RENSEA/CREPSUM: # of scientists ~200 Funding~7M JPY

Quite useful for networking but not enough to conduct science


Need to prepare research funding by members

Platform for exchanging knowledge, building research plan, transfer of scientific technology, outreach, exchange young scientists

**Functioning as like “scientific association/organization”**



# Importance in the exchange of students/young scientists

- Exchanging students: many scientists who took PhD/Master degree have been played a key role of collaboration. Their contribution is long-continued and tight.
  - Medium/short term training for young scientists/students are useful for the transfer of marine science technology
  - Promote exchange students/scientists further in the coming collaboration scheme
- 

# Increased importance of human networks

- Global warming and anthropogenic stressors on marine ecosystems

UN SDGs

UN Ocean Decade

*Too big to ignore, too big to tackle by one country*

- Need interdisciplinary/transdisciplinary science for society
- Convention on Biological Diversity (CBD) and corresponding domestic law
- Geopolitical issues

**We should maintain and develop the human network we hold**



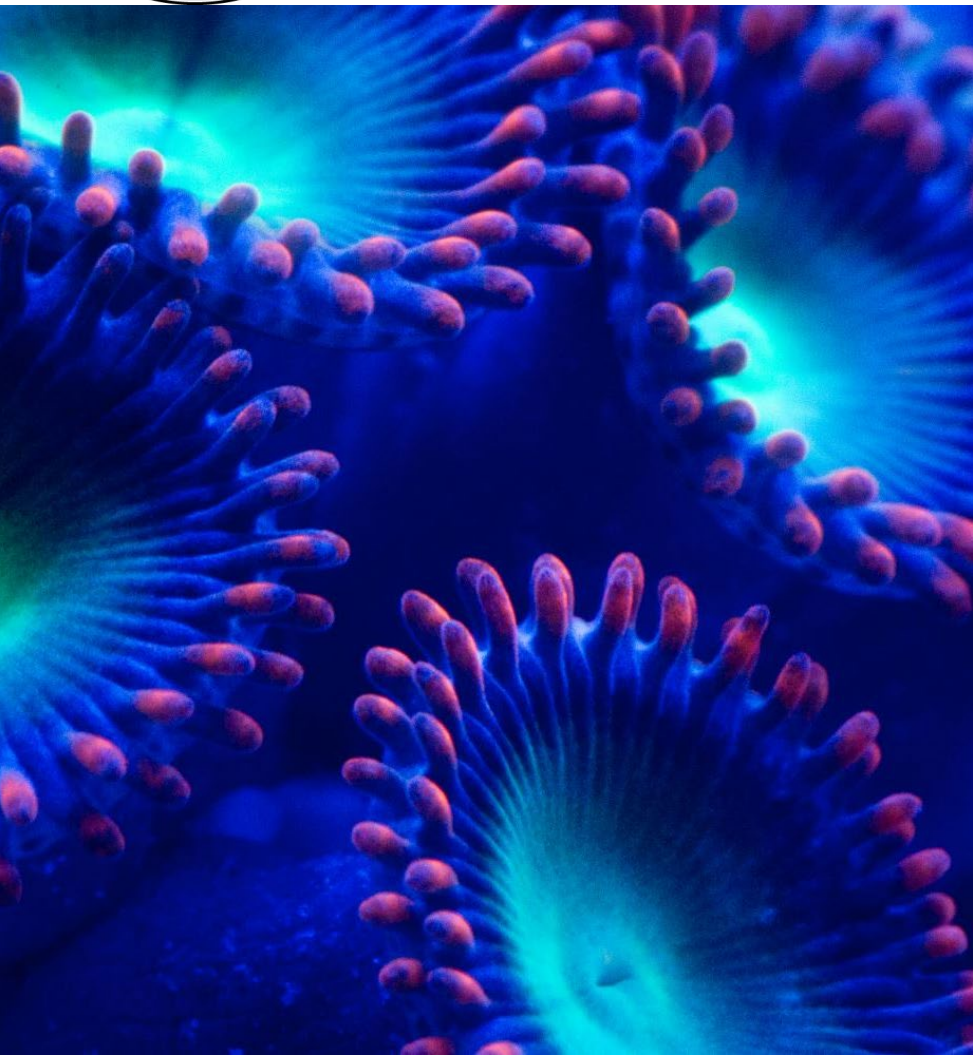


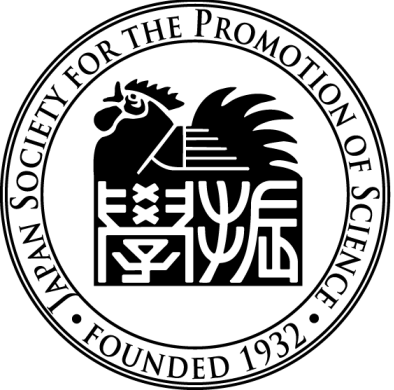
# JSPS

## JSPS core-to-core

---

- Good for establish network
- Too small to carry out field study and laboratory experiments if covering many disciplinary sciences
- Need external funding (or, multiple core-to-core)

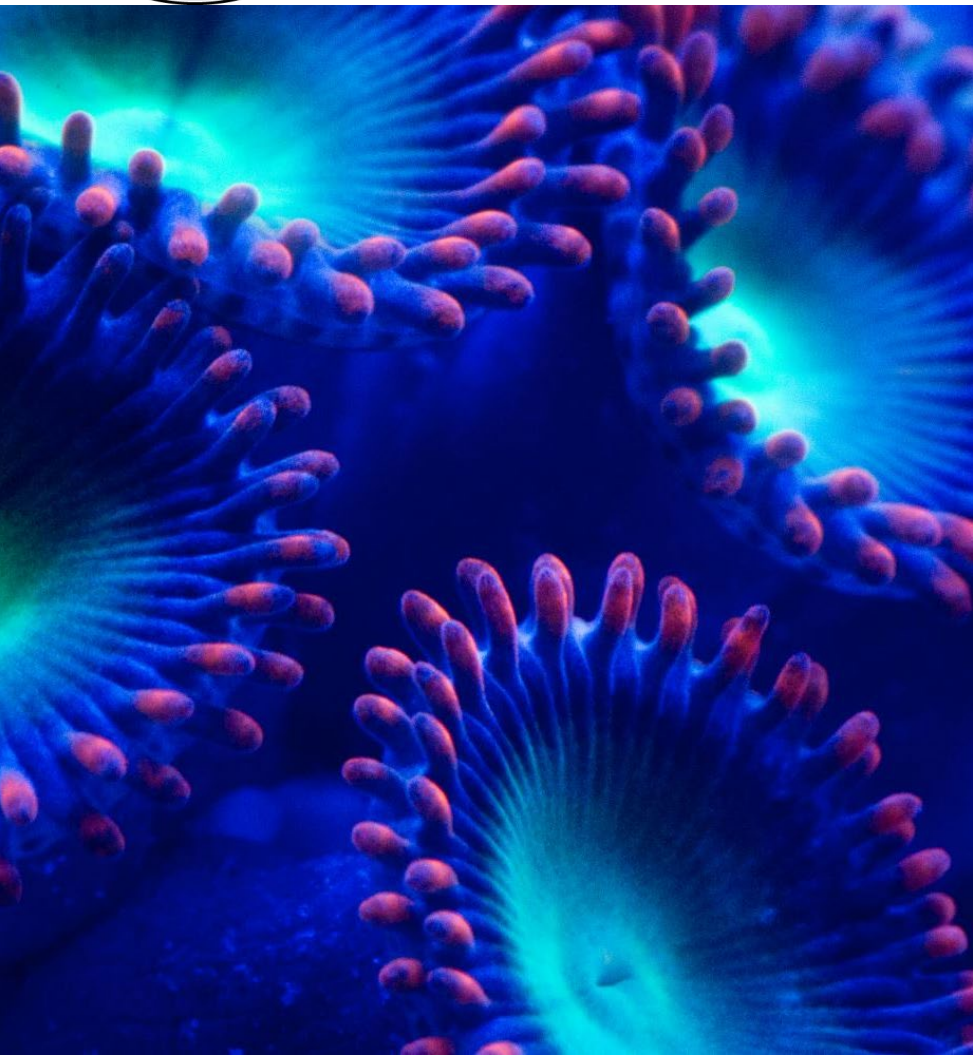




# JSPS

## JSPS International Research Program other than JSPS Core-to-core

---



- JSPS Bilateral program
- Research: (Indonesia, Thailand, Philippines, Vietnam), need matching fund, relatively small funding size (2-3 M/2-3y)
- Seminar: all countries in SEA
- JSPS Fund for the Promotion of Joint International Research
  - International Leading Research 国際先導研究  
JPY 500 M
  - International Collaboration Research 国際共同  
研究加速基金（海外連携研究）3-6 years, JPY 20 M

# Need to know fund raising way in each country

- Fund raising process/strategy are variable from country to country
- Some fundings require matching fund at the same time of the start of the program, another require it prior to the start.
- Useful for sharing fund raising process of each country



How to obtain  
funding beneficial  
for members and  
groups?

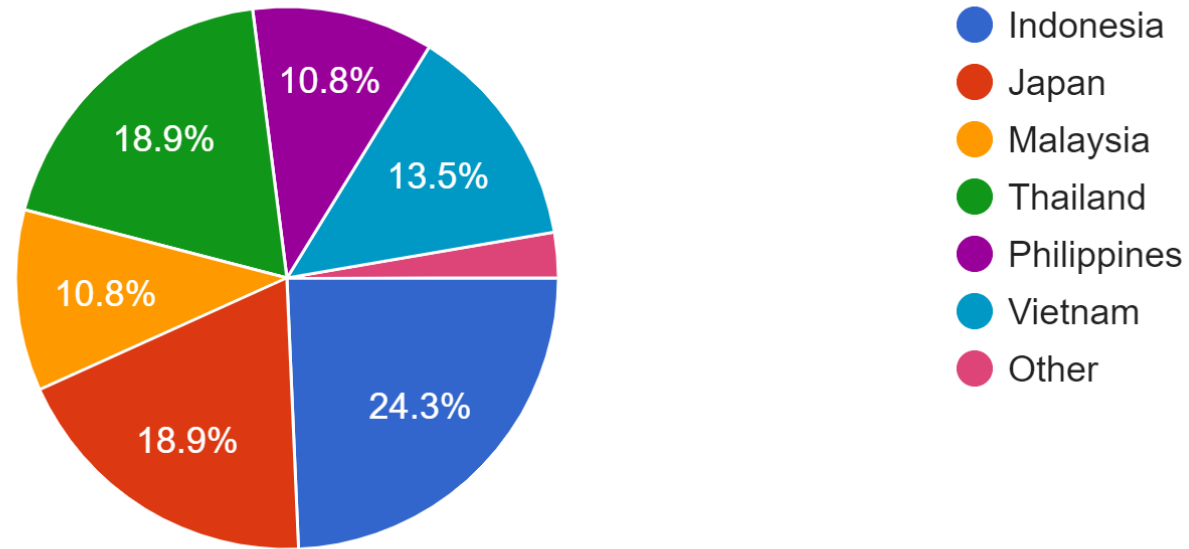
How to develop our  
human network?



# Ideas from attendee

Country

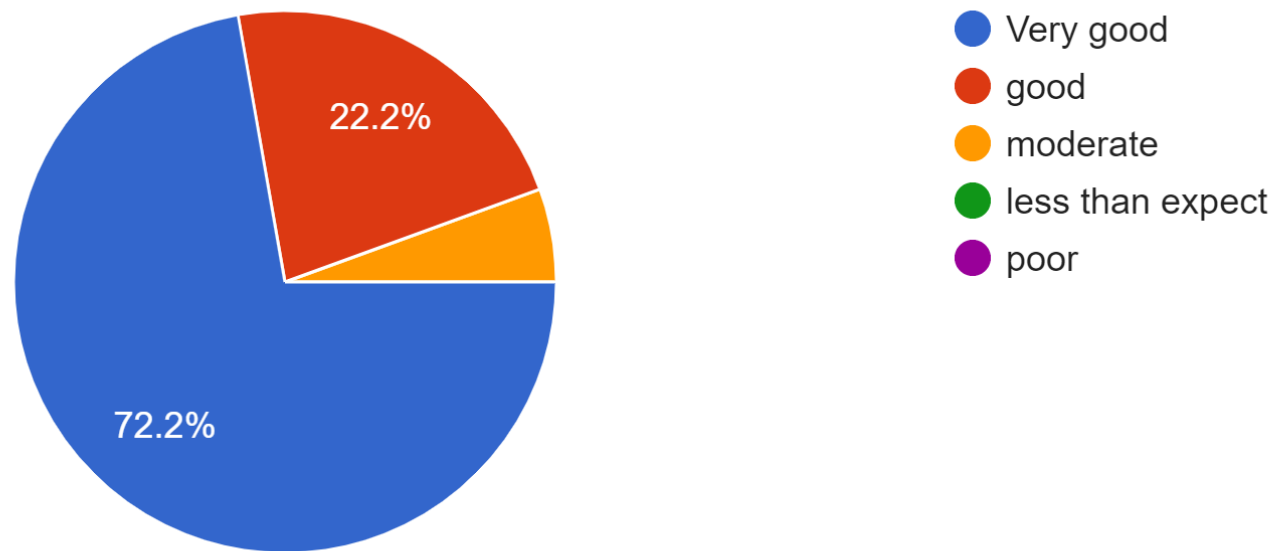
37 件の回答



# Ideas from attendee

How do you evaluate past JSPS Core-to-core project?

36 件の回答



# Ideas from attendee

- I am very fortunate to have participated in the CREPSUM and JSPS network of past training activities. I have learned a lot about using the marine ecosystem sustainably.
- From 20 years ago to the present, the value has been gradually getting lower due to the limitation of available budget
- Matching grant or support grant is a must to exaggerate the future research and activities.
- Did not get any information on project activity information from the past few years. Maybe because of COVID-19.
- We have successful collaboration even we faced COVID19 pandemic. Physical oceanography group still keeps in touch by working together closely on the eutrophication researches.

# Examples of the next partnership between SEA and Japan for marine ecosystem research

- Multiple JSPS Core-to-core programs (B) Asia-Africa simultaneously (e.g., JSPS CtC Coral reef, JSPS CtC plastic pollution, JSPS CtC tourism and marine ecosystem,,,) )
- Obtaining JSPS Core-to-core Advanced Research Program by preparing matching fund for both sides
- Multiple JSPS bilateral programs (two countries) between Japan and Institutions in the list of JSPS bilateral program
- Multiple JSPS bilateral seminar
- Using the benefits of present human network established under OUR JSPS programs, maintain and develop the network
- Sharing fund raising info. using of AORI's Section for Southeast Asia Research Alignment as a networking platform
- Having “Joint Seminar” by using the function (and funding) of SSEAR, CIC, AORI. Need funding to hold the seminar





# Establishment of Section for Southeast Asia Research Alignment

*In spite of the past successes of Japan-SEA collaboration, the expected scheme of scientific collaboration between Japan and SEA is changing due to changes in the scientific and social situation. It is requested to promote advanced science rather than just continuing present scheme in JSPS Core-to-core program. At the same time, it is necessary to further promote research cooperation with SEA in order to tackle the global change issues we are facing. These issues are too big to tackle by one country. Also, the scientist network built through past research and educational activities of AORI is quite useful for the implementation of research activities in the area of geopolitical issues and to comply with laws and regulations for conservation and utilization of biological and genetic resources in each country. AORI should further develop the scientist network between Japan and SEA.*

# Establishment of Section for Southeast Asia Research Alignment

## *Terms of Reference:*

- 1) Promote joint research between the Atmosphere and Ocean Research Institute (AORI) and Southeast Asian countries.*
- 2) Promote the formation of consensus and exchange the Memorandum of Agreements with universities and research institutions in the Southeast Asian necessary for joint research activities.*
- 3) Provide information on the international laws and regulations of each country necessary for conducting joint research between Japan and Southeast Asian countries.*



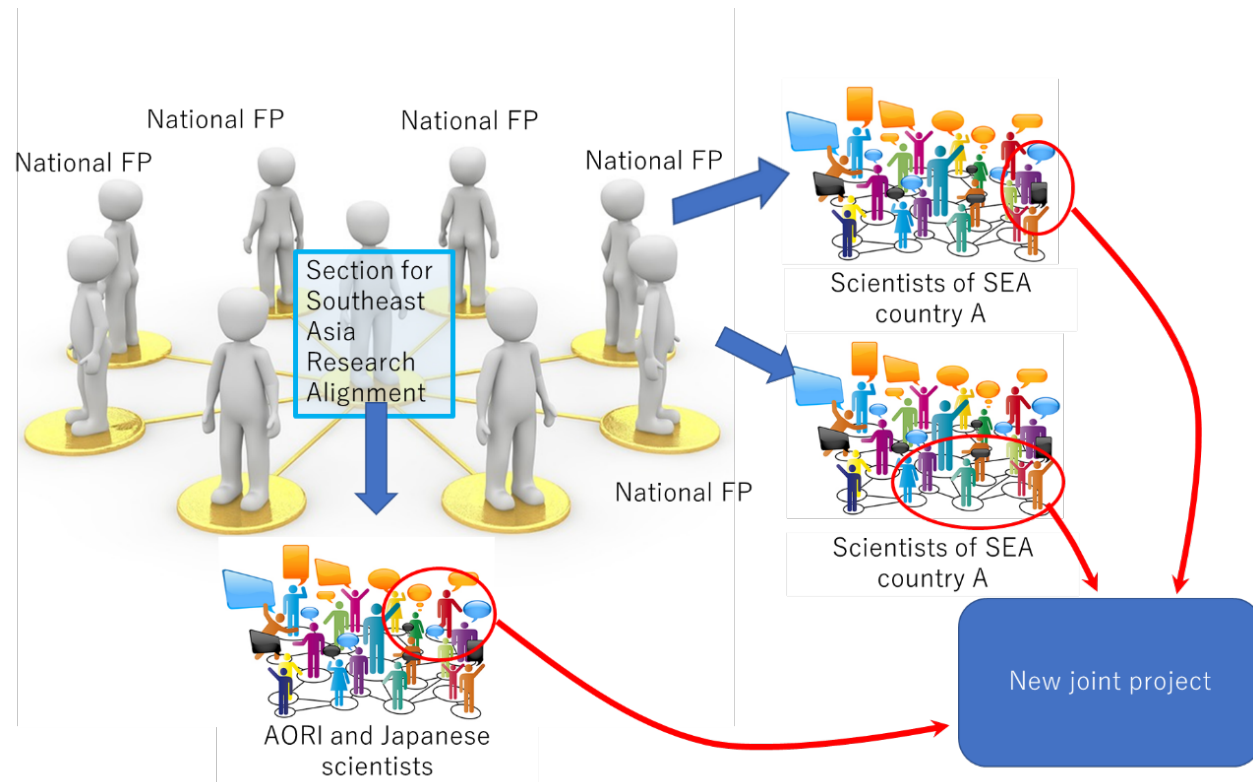
# Establishment of Section for Southeast Asia Research Alignment

## *Terms of Reference:*

*4) Prepare joint use/research facilities of AORI to promote joint research between researchers at the AORI, domestic research institutes and Southeast Asian countries.*

*5) Hold research meetings on the atmosphere and ocean sciences of Southeast Asia to exchange scientific knowledge, seek new research themes, and prepare proposals for joint research.*

# Establishment of Section for Southeast Asia Research Alignment



- ❑ Establishment of SSARA is based on AORI's recognition of the importance of human networks based on long-term JSPS collaboration btw SEA and Japan
- ❑ SSARA is AORI's unit but not only for AORI's scientists/students but also for all the scientists want to collaborate for SEA marine ecosystem research





# AORI welcomes collaborators

- AORI's Guest Scientist scheme

  - Guest researcher: supporting travel, housing (from 1 mo to 1-year)

  - Visiting researcher: For short period (own funding required)

- AORI's facility

  - Accelerator, NanoSIMS, TEMS/SEMS/EPMA, coastal stations  
(Otsuchi town, RV *Hakuho Maru*, RV *Shinsei Maru*)

- PhD/Master students

  - MEXT scholarship

  - Spring GX (for PhD students)



# Join our next stage res. & education networking for SEA marine ecosystems

- Let's start planning of next JSPS project in the 4<sup>th</sup> year of CREPSUM
  - Apply JSPS Core-to-core, JSPS Bilateral, and other funding by using human network
  - Exchange know-how of fund raising, writing proposal, MAT/PIC for CBD
  - Find new talents/students who will lead SEA marine ecosystem studies, and support them (scholarship, short/medium term training)
  - Contribute to realize “sustainable use of marine ecosystem services” and to contribute SDG14 and UN Ocean Decade for human well being
-